

The UBS Partnership Program

The UBS Partnership Program gives you the ability to rent our state-of-the-art inventory of equipment coupled with expert consulting and support from project conception to assembly training.

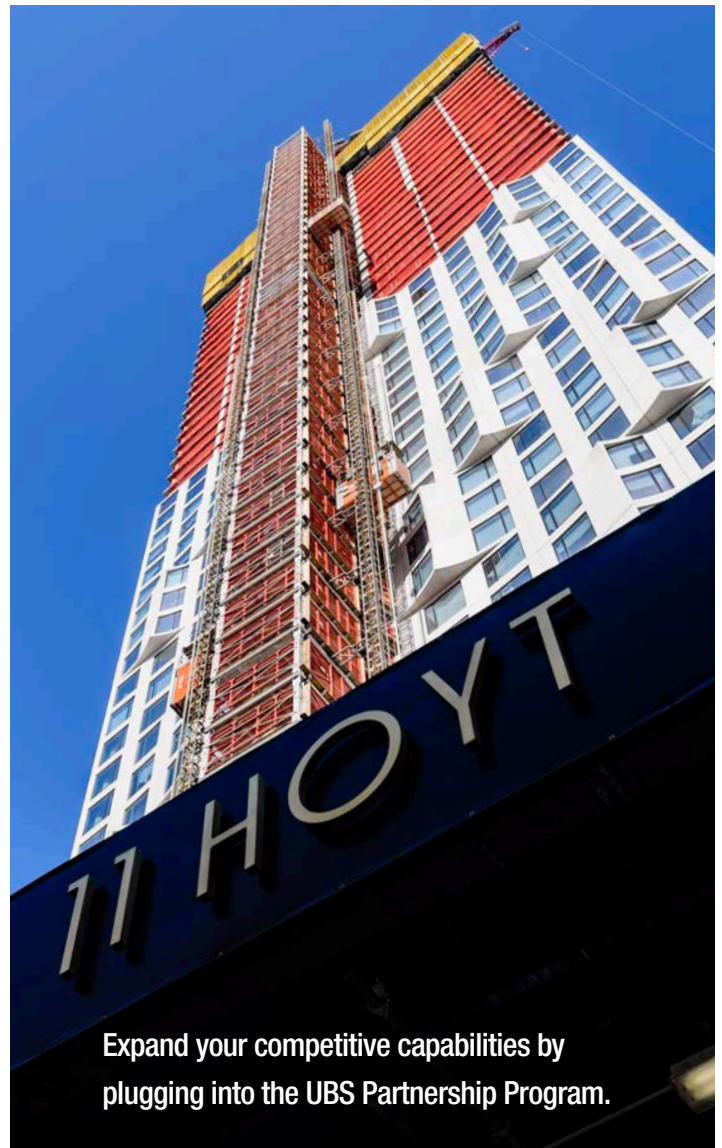
Throughout its nine decades in business, UBS has earned its reputation as an expert hoisting, access, and protection system company. A trusted and experienced supplier to the construction industry since 1931, UBS is known for its innovative engineering, design, ability to accommodate high-speed hoists, aluminum access equipment, and the latest patented protection systems. UBS has participated in some of the most prestigious and challenging projects which has led to years of capital investment in one-of-a-kind solutions.

With a track record of engineering custom solutions for complex building projects, UBS is introducing a new and unique service called the **UBS Partnership Program**. We call it a “Partnership” because it gives you the ability to rent our state-of-the-art inventory of equipment as well as access expert consulting and support from project conception, estimating assistance, engineering, and assembly training.

UBS is capable of engineering and renting your firm any Common Platform hoist, setback tower, scaffold and access solution needed. By plugging into the **UBS Partnership Program** your company will be able to expand its competitive capabilities.

Let's have a conversation.

Email info@ubs1.com or call 914-699-2400



Expand your competitive capabilities by plugging into the UBS Partnership Program.

The UBS Partnership Program

The Depth of the UBS Team

There are few companies in the construction industry who can innovate creative solutions for complex new construction projects, while simultaneously prioritizing crew safety and construction efficiency. UBS is one of those companies and we credit our success to the expert team we have built.

We have prioritized investments in technology and our personnel, resulting in a full-service company uniquely trained to understand the needs of all the participants in the building process from architects, general contractors, subcontractors to city agencies, to the workers in the field.

When participating in the **UBS Partnership Program** you'll gain access to our in-house team that can provide a wide array of multi-disciplinary expertise from drafting, engineering, estimating, fabrication, carpentry, back office support, project management, training, and consulting which enables us to provide a wide array of service offerings customized to any construction project need.

Plug into Decades of Experience Innovating Solutions for Complex Building Projects.

- Hoist Towers
- Hoist Ties
- Setback Solutions
- Common Platform
- Platform Design
- Span Bridges
- Runway Ramps
- Dual Mast Hoists



The UBS Partnership Program

The Common Platform System



An Innovative Hoisting Solution

At the time of construction, the AOL-Time Warner Building was the largest hoisting project ever executed in NY. The design of the building and the corresponding setbacks required an innovative hoisting solution that had never been done before. Each of the 750' tall twin towers were serviced by four custom built extended cab personnel/material hoists and multiple UBS material-only hoists, located around a common platform at each floor. Executed within the crowded confines of Columbus Circle in NYC, 90% of the hoist installation was performed at ground level and then "picked" up by crane and installed. It was an innovative first, greatly reducing worker's "time in the tower at height" risk. Long span bridges were designed for a live load capacity of 100psf and lifted in position with a crane. The total length of the runway at the 55th floor was over 100' for the south tower and over 70' for the north tower.





- Multiple hoist cars on a 15'x15' Common Platform
- 90% of hoist installation performed at ground level
- Long span bridges designed for live load capacity of 100psf
- Runways up to 100' built for both towers
- Work executed within the crowded confines of Columbus Circle, NYC

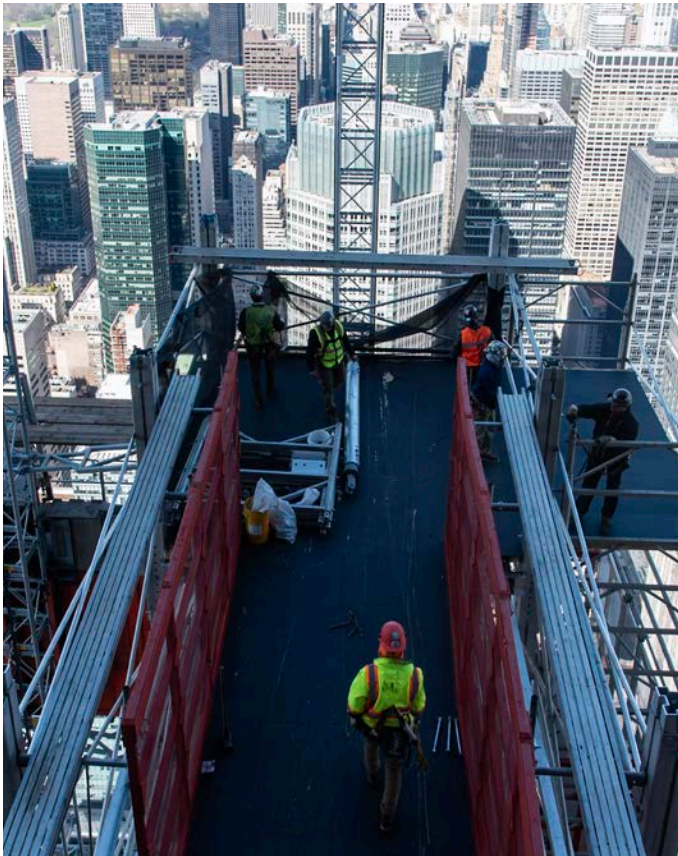
The UBS Partnership Program

The Benefits of the Common Platform System



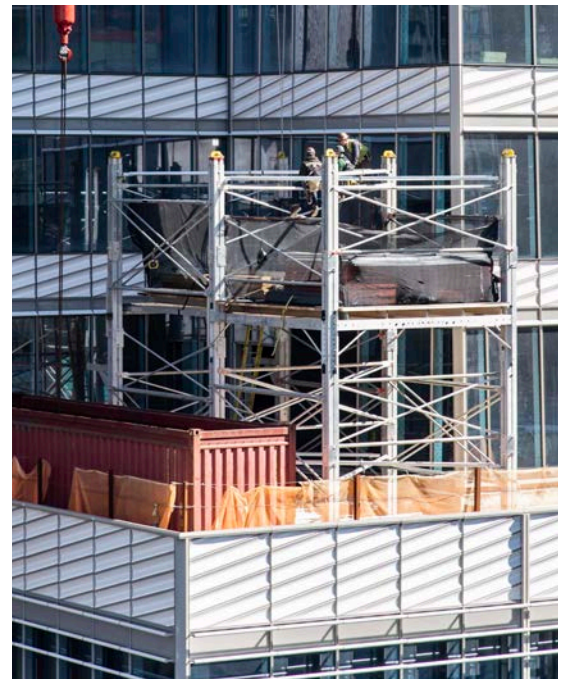
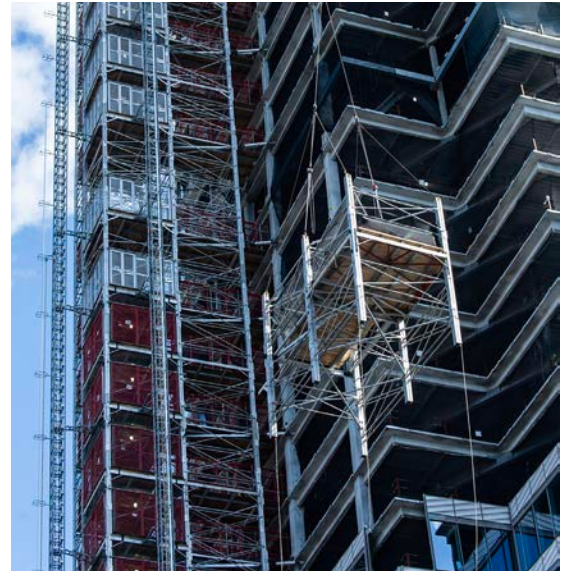
“Close the Curtain” Faster

The hoisting solution engineered for the AOL-Time Warner Building advanced the concept of the common platform introduced by UBS years earlier, opening the door for innovative hoisting solutions on contemporary projects today. Hoists are necessary to lift materials and personnel as the building rises, but they can also hinder the timely completion of the project if they take up too much building frontage, inhibiting the crews ability to “close the curtain” so that interiors can be completed. The common platform solves that problem with up to 6 cars running off one 15’x15’ platform, thereby greatly accelerating production time.



Common Platform pod being picked by crane to the setback floor.

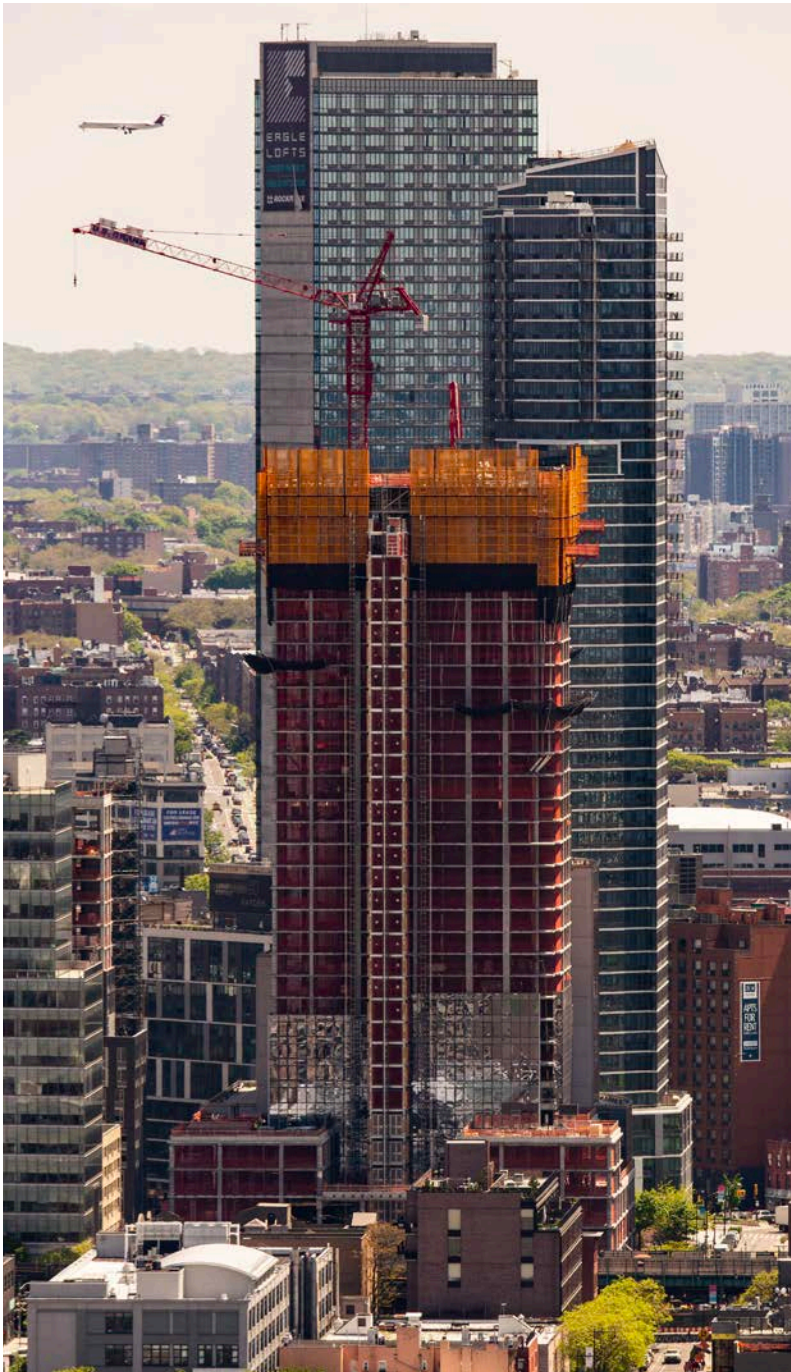
Crew on landing area ready to receive the pod.



- The Common Platform gets assembled at ground level greatly reducing “time in the tower at height risk.”
- A crane picks up and raises the Common Platform pod to the setback floor.
- The Common Platform gets stacked on top of the existing hoist tower and gets tied to the structure.
- Up to 6 cars can operate off one 15’x15’ Common Platform greatly reducing the building frontage taken up by hoisting cars.
- Common Platform ties can be coordinated with the final building facade to facilitate installation while hoists remain in place and operational.

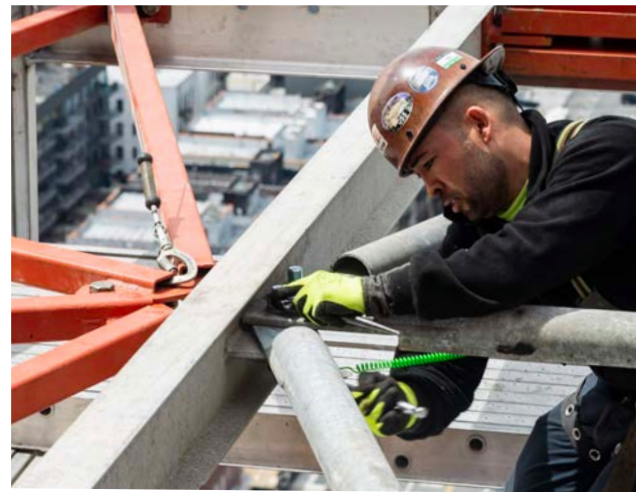
The UBS Partnership Program

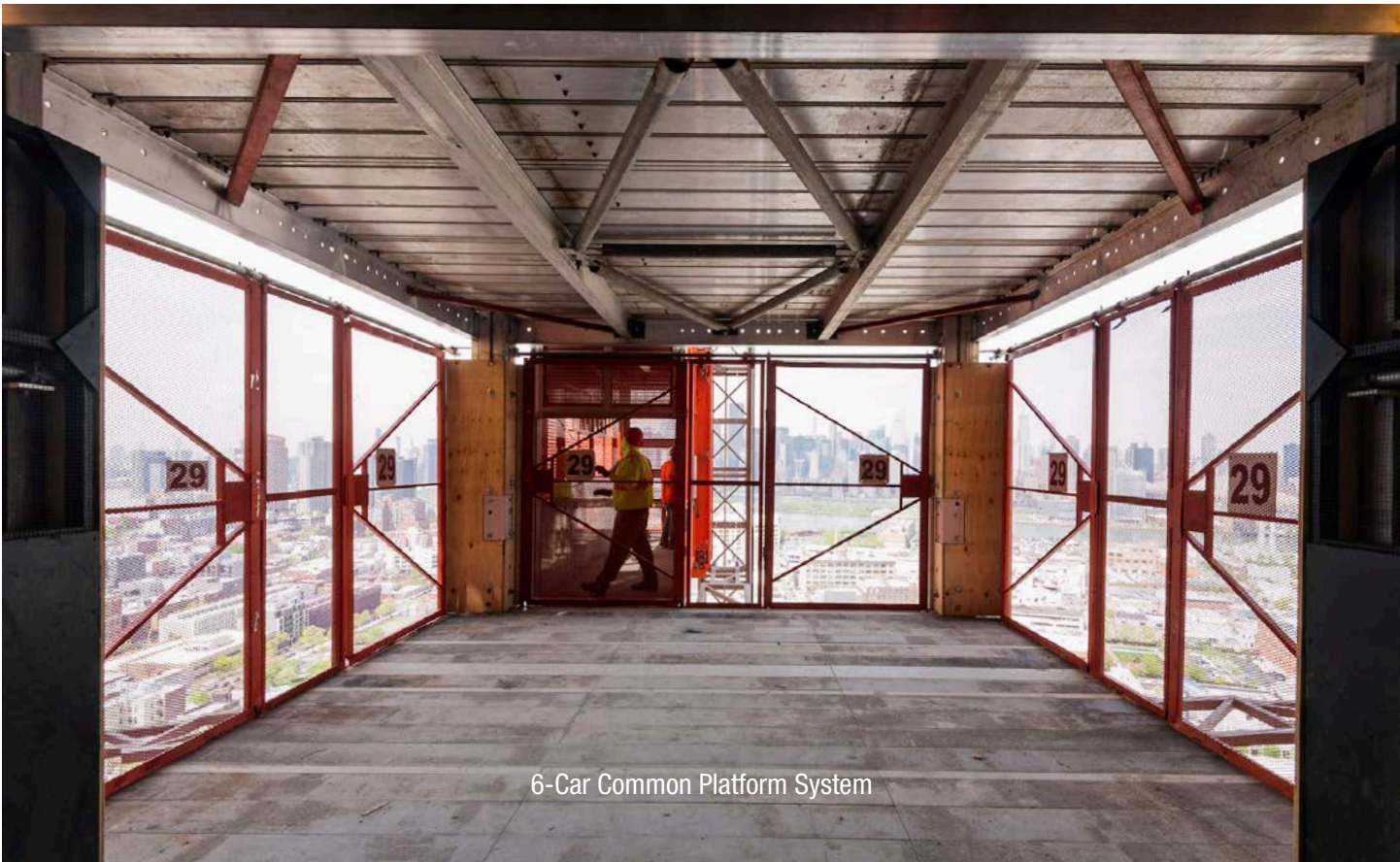
UBS Common Platform Ties



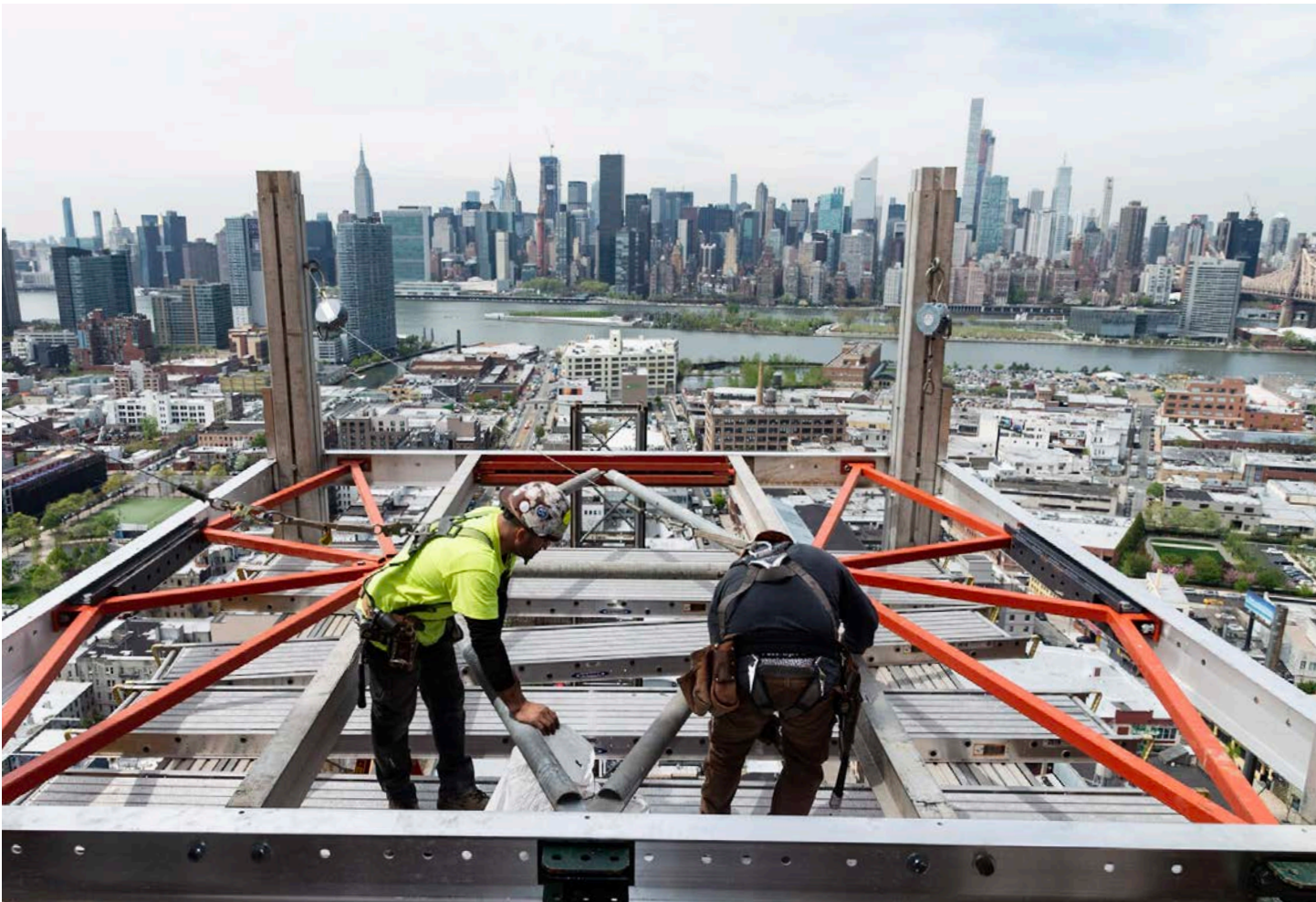
Flexible and Easy to Install

The UBS Common Platform ties are easy to install and the shared common platform is capable of accommodating 3 dual rack and pinion cars for a total of 6 cars. The benefit of a shared platform is the minimal impact it has on the building facade. The common platform can be tied through windows giving access through very small openings, thereby enabling the interiors to be finished earlier in the construction process.





6-Car Common Platform System



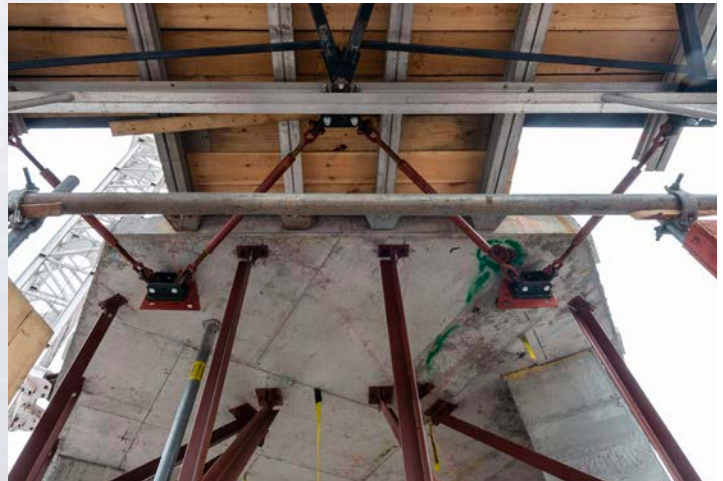
The UBS Partnership Program

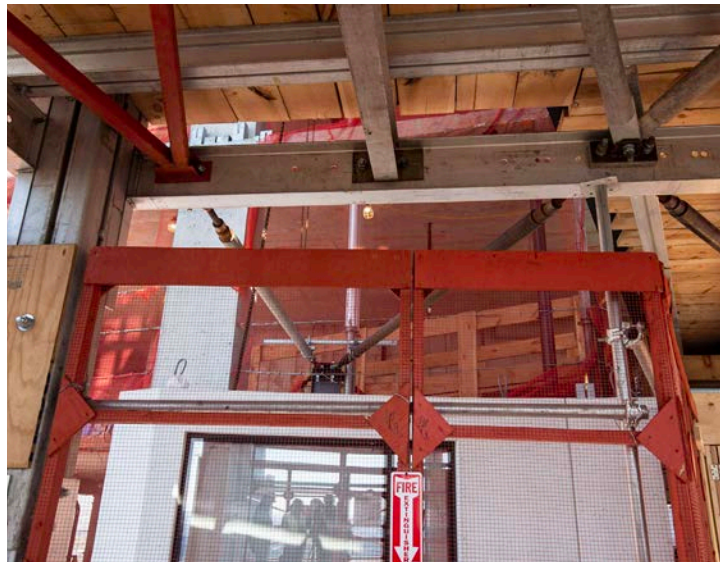
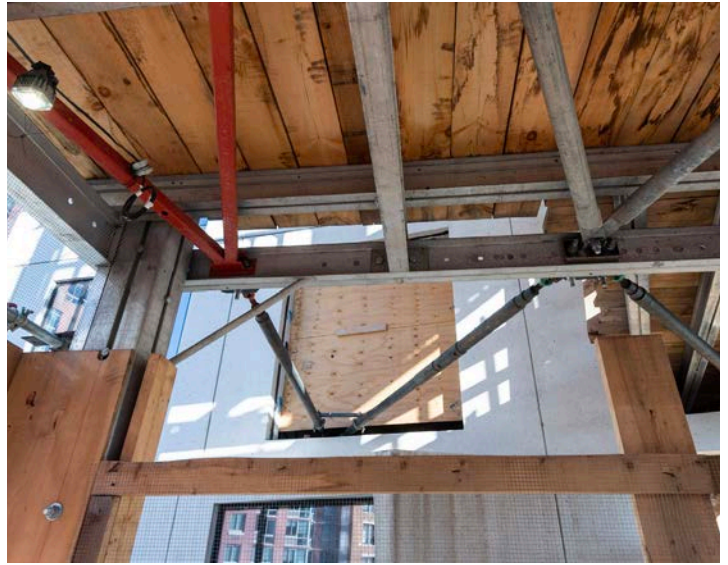
Common Platforms Maximize Access



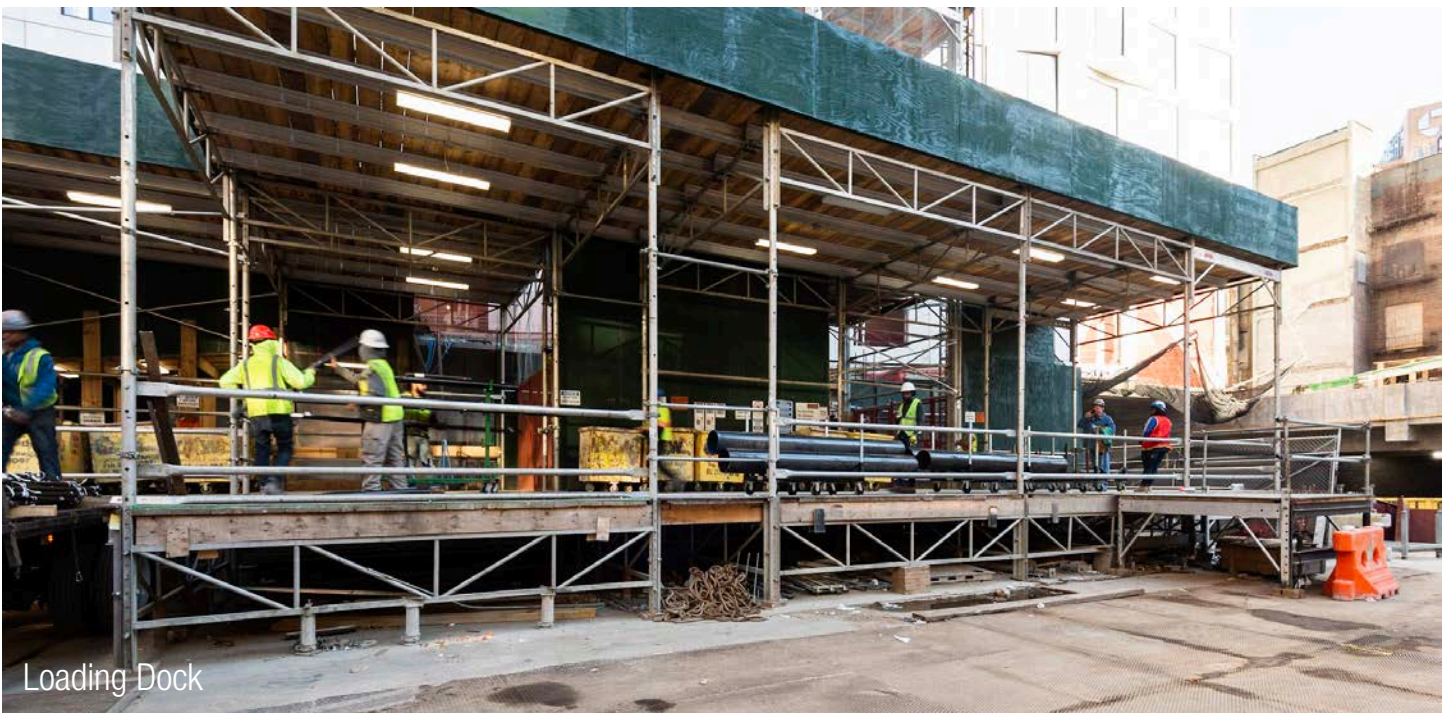
Simple Solutions to Complex Problems

A building's design and geometry can be challenging for providing efficient hoist installation locations. To meet those challenges UBS can provide common platforms and setback towers that allow you to place your hoist on-site where it is best suited for truck access, material, and manpower while providing access to all floor levels. This can be accomplished regardless of changing building profiles or building setbacks on upper floors.





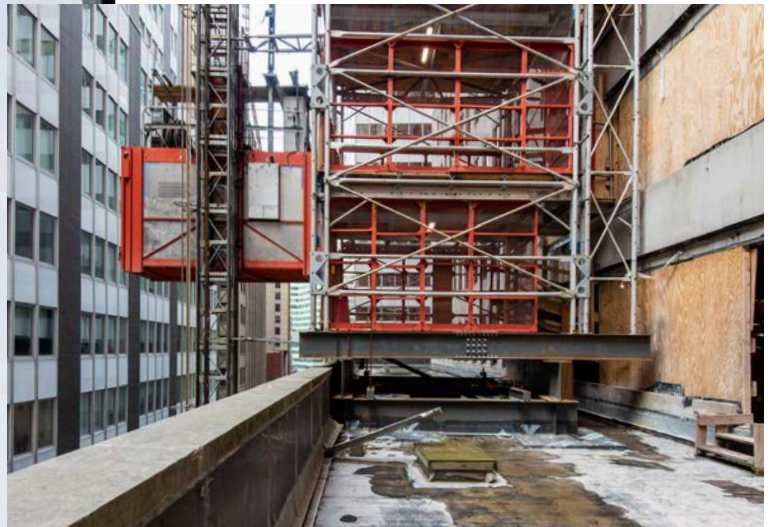
• Hoist ties through windows.



Loading Dock

The UBS Partnership Program

Setback Structures Optimize Workflow

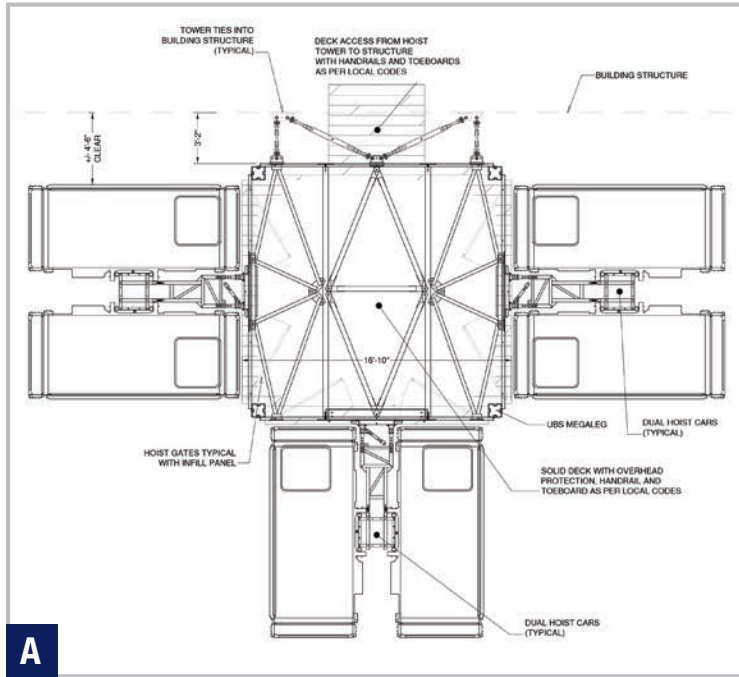


One Wall Street

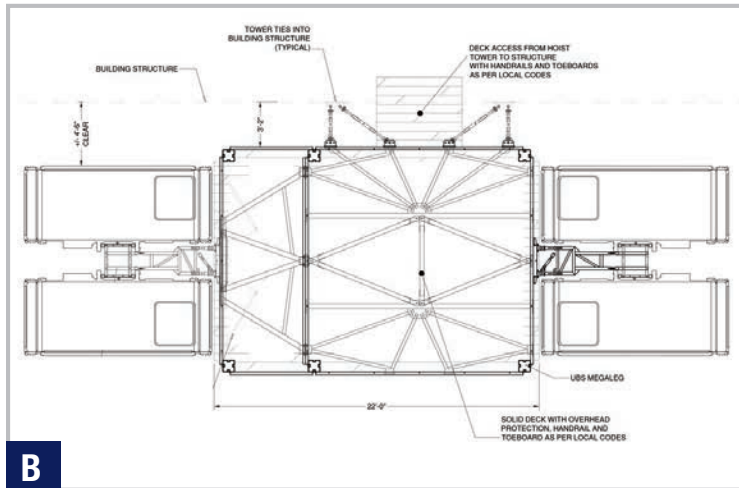
Through the use of transfer steel on the upper setback, UBS was able to erect a large setback structure on the upper floors of the building. Setback structures help maintain an efficient construction schedule under many varying conditions including tight footprints with space restrictions. In the case of One Wall Street it was necessary to get the hoist setback tower off the street to maintain an open lane for fire trucks.

The UBS Partnership Program

The Common Platform is Modular



A



B

A 15'x15', 6 Car Hoist Tower

B 22'x15', 4 Car Hoist Tower

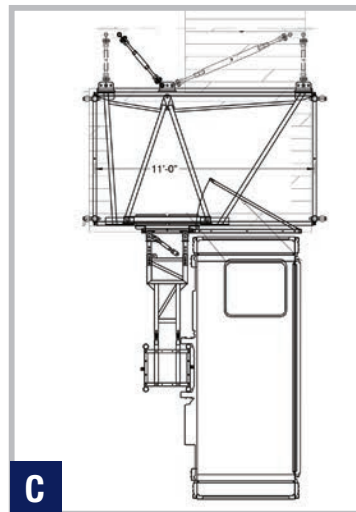
C 11'x6', 1 Car Hoist Tower

D 11'x15', Setback Tower with 2 Cars

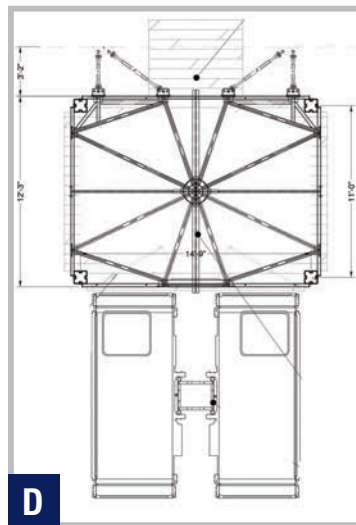
E 15'x6', 2 Car Hoist Tower

A Multitude of Size Configurations

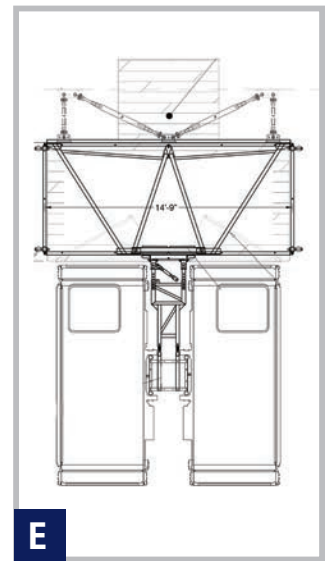
The UBS Common Platform can be customized to varying dimensions and configurations to allow hoisting to be located where it maximizes the flow of trucks, materials, and manpower to upper floors while minimizing the openings in the building. All UBS structures are modular and constructed from light-weight aluminum allowing engineered solutions to fit any jobsite location while imposing 60% lighter loads on building structures than comparable steel structures.



C



D



E

The UBS Partnership Program

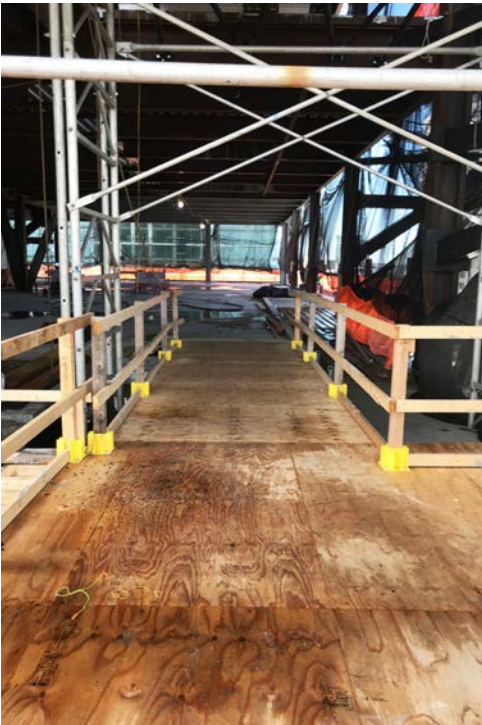
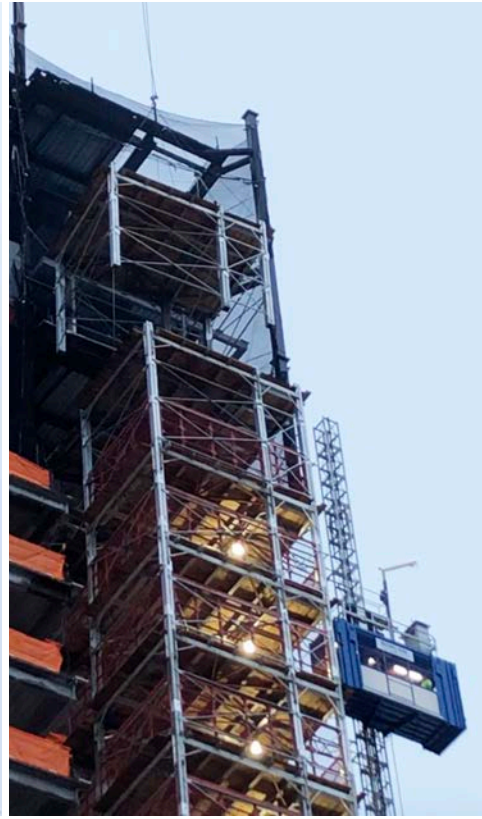
Common Platform-Setback Tower Reduces Materials and Personnel Transfer Time



Boston Garden Office Tower

Bowline Hoisting utilized the UBS Partnership Program to engineer and implement a common platform solution with 8' wide x 26' long runway towers on the even floors to accommodate the changing building facade. The common platform was sized and engineered along with two Bowline hoist cars to deliver the 14' curtain wall panels directly from the ground floor to their designated installation floors, eliminating the need for two additional hoist cars and operating engineers from the setback on the 8th floor through the 31st floor. UBS and Bowline have maximized the flow of manpower and material to the floors they are needed on, while reducing overall hoisting cost.





- The Common Platform pod gets assembled at ground level increasing safety by reducing the amount of time men spend erecting the common platform at elevated heights.
- Once assembled the crane lifts the two floor pod to the top of the Common Platform where it is connected and tied to the building.
- Two Bowline hoist cars operate off the Common Platform.
- Crew of 4 with no previous hoisting experience trained on the job with UBS consultant John Curry supervising.
- Estimated to save 4 months on project schedule.